

What to do if you are evacuated



Follow instructions from the emergency services



Check if neighbours know or need help



Get your family together



Get your pets together (leads /baskets needed?)



Take any prescribed medicines with you



Don't return home unless told you can

If there is time

- Take warm clothing for everyone
- Take baby and other special foods if needed
- Make sure fires are out and all appliances and equipment are switched off
- Shut all windows and lock your property

Radio Frequencies

BBC Radio Gloucestershire - 104.7, 95.0, 95.8 FM & 1413 AM
Severn Sound - 102.4, 103 FM & 774 AM
BBC Radio Bristol - 95.5, 94.9, 104.6 FM & 1548 AM
BBC Hereford & Worcester - 104.0, 104.6, 94.7 FM & 738 AM
Wyvern FM - 96.7, 102.8, FM
BBC Radio Wales - 95.1 - 95.9 FM
Red Dragon FM - 97.4 or 103.2 FM
BBC Radio Wiltshire - 103.6, 104.3, 103.5, 104.9 FM

Making your flood plan

Issues to consider

- Cleaning up after a flood
- Contamination
- Insurance
- Drying out
- Restoring main services
- What is salvageable?
- Health preparation and storage
- Health Issues
- Repairs
- Helpful Contacts

Leaflets on all these subjects can be obtained from the Environment Agency.

Help on the Web

Link into our website to check on the flood status of the river near you:

<http://www.gloucestershire.gov.uk/emergencymanagement>

Also you can look at the Environment Agency's website:

www.environment-agency.gov.uk/subjects/flood for information on how to prepare and about the current status of flood warnings.

On this site you can check 'What's in my Backyard' for information local to you.

You can also ask for help finding out these details from your local library.

You can find many more links on the Government website UK Resilience:
www.ukresilience.info/flooding_help.htm

You can contact the Emergency Management Team on 01452 425013 for more information.

February 2004

Ready to Respond

from the Emergency Management Team

contents

What emergencies might we face?

Initial steps to take

Severe Weather or Power Cuts

Flooding

When flooding is imminent

Go in, Stay in, Tune in

Emergency Contact Numbers

What to do if you are evacuated

Radio Frequencies

Making your flood plan

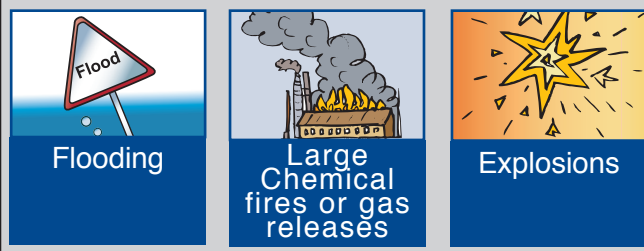
Help on the Web



Emergency Advice for you at home

What emergencies might we face?

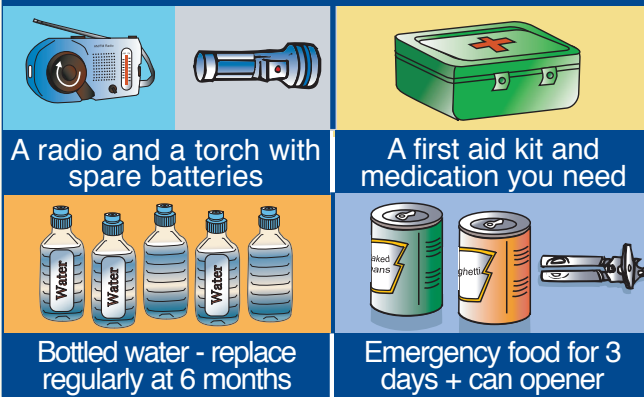
There are many sorts of emergency. Here are a few of the more common ones:



Initial steps to take

- Keep all family and friends phone numbers with you. Choose someone living away to be your family contact.
- Make family plans for possible local emergencies and make sure your children understand what to do and practise the plans.
- If you live near an industrial site you will be told if there are special emergency arrangements for your area. For other fires or chemical releases see the Go in, Stay in, Tune in section.

Pack an emergency bag or kit and keep it handy. It should contain:



Severe Weather or Power Cuts

Put together an emergency kit, make sure you have batteries and a radio

Be aware of severe weather warnings and plan ahead for what you will need to do

Flooding

The main predictable hazard is regular flooding in well known areas around the rivers Severn, Wye and Avon.

Make a plan of action
See issues to consider (overleaf)

Make any preparations (eg install products to prevent water coming in)

Insure your property and contents

When flooding is imminent



Put your plan into action, eg move your furniture and valuables upstairs, place sandbags or barriers in position



Listen to your local radio for updates. See back of Emergency Contact Numbers card for radio frequency details

Ring the Environment Agency's
Floodline
0845 9881188 for more information

Go in, Stay in, Tune in

If there is a danger from smoke, fumes or chemicals:

Go in - Go indoors



- Go upstairs where possible
- Do not collect children from school - they will be properly cared for

Stay In - Close all doors and windows



- Extinguish all fires
- Switch off gas supplies
- Keep away from windows
- DO NOT go out until advised by the Police

Tune in - Tune in to local radio



- Follow official instructions
- DO NOT use the telephone - keep lines free for emergency use only

Keep handy family numbers, non-local family or friend contacts, doctor, hospital, power company:

Your Emergency Contact Numbers

Family Contact _____
 Doctor _____
 Nearest Hospital _____
 Police _____ 0845 0901234
 Electricity Faults _____ 08457 331331
 Gas Leaks _____ 0800 111999
 Area Water Company _____
 Env Agency Floodline _____ 0845 9881188
 Other useful numbers _____